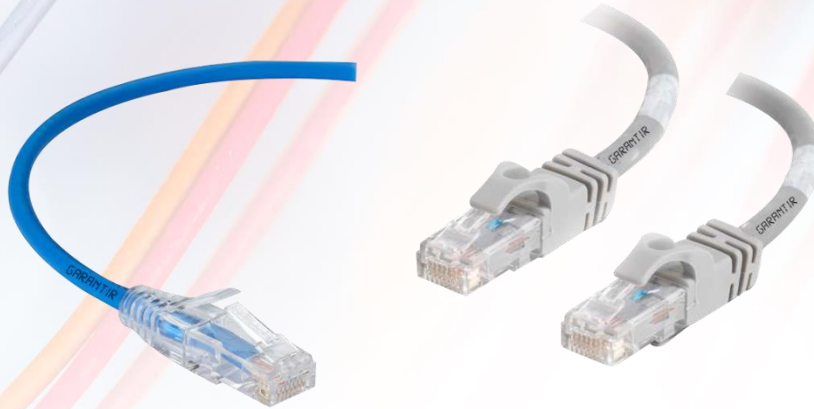


## Twisted Pair (UTP) CAT-6, 24AWG Patch Cord



Garantir Patch Cable are suitable for Voice, Video and High Speed Data transmission exceeding EIA/TIA 568-C.2 CAT6 specifications. Guaranteed performance in compliance with the most demanding LAN applications such as Gigabit Ethernet, 100Base-Tx, token ring, 155 Mbps ATM, 100 Mbps TPPMD, Broadband and Digital Video and Digital (VoIP) voice.

### FEATURES :

Style : Molded Flexible Boot Type

Size : 4Pair, UTP 24-26 AWG, 100 OHMS (STRANDED)

Standard /Certification : UL /ETL COMPLIANT

CAT 6 standard backward compatible with CAT 5e Standards.

### CONSTRUCTION:

Conductor	Solid Bare Electrolytic Grade Copper
Nominal Wire Diameter	0.51 ±0.015 mm
Insulation	HDPE
Pair	2 Core twisted
No. Of Pair	Four (04)



Color Code:	
Pair #1	Orange-White with Orange
Pair #2	Brown-White with Brown
Pair #3	Blue-White with Blue
Pair #4	Green-White with Green
Outer Sheath	PVC/LSZH
Colour of Sheath (as per Customer Required)	L-GREY
Approximate OD	5.70 ± 0.3 mm
Sequential Marking(as per customer Required)	At Every Meter
TEMPERATURE RATING	- 20 to +60 °C
Filler	HDPE

**CONNECTOR:**

Type	<i>UTP RJ 45 both ends</i>
Category	<i>CAT-6</i>
Assembly	<i>Factory Crimped And Crystal Moulded</i>
Length in Mtrs.	<i>As Per Requirement</i>

**LOW FREQUENCY ELECTRICAL PARAMETER**

- ❖ CONDUCTOR RESISTANCE (DC): 93.80 OHMS/1000MTR@ 20 DEGREE C. MAX.
- ❖ RESISTANCE UNBALANCE: 5% MAX
- ❖ MUTUAL CAPACITANCE: 5.6 nF/100 MTRS MAX.
- ❖ CAPACITANCE UNBALANCE PAIR/GROUND: 330pF/100M MAX
- ❖ PROPAGATION DELAY: 536 ns/100M MAX.
- ❖ NORMAL VELOCITY OF PROPAGATION: 69%
- ❖ IMPEDANCE: 100±15% OHMS
- ❖ WORST CASE CABLE SKEW : 45NS/100M
- ❖ GENERALLY CONFIRMING TO EIA/TIA 568-C.2 AND IEC/ISO 11801



## HIGH FREQUENCY ELECTRICAL PARAMETER

FREQ (MHz)	ATT (dB/100m) max.	NEXT (dB) min.	PS.NEXT (dB) min.	ACRF (dB@100m) min.	PS.ACRF (dB@100m) min	Return Loss (dB/100m) Min.
1	2.1	65.0	62.0	63.3	60.3	19
4	4.0	63.0	60.5	51.2	48.2	19
8	5.7	58.2	55.6	45.2	42.2	19
10	6.3	56.6	54.0	43.3	40.3	19
16	8.0	53.2	50.6	39.2	36.2	18
20	9.0	51.6	49.0	37.2	34.2	17.5
25	10.1	50.0	47.3	35.3	32.3	17.0
31.25	11.4	48.4	45.7	33.4	30.4	16.5
62.5	16.5	43.4	40.6	27.3	24.3	14.0
100	21.3	39.9	37.1	23.3	20.3	12.0
200	31.5	34.8	31.9	17.2	14.2	9.0
250	35.9	33.1	30.2	15.3	12.3	8.0

## ORDERING INFORMATION

PATCH CORDS	
GT-CPC-UU-C6-P01-X	Garantir CAT-6 U/UTP Patch Cord PVC 01M
GT-CPC-UU-C6-P02-X	Garantir CAT-6 U/UTP Patch Cord PVC 02M
GT-CPC-UU-C6-P03-X	Garantir CAT-6 U/UTP Patch Cord PVC 03M
GT-CPC-UU-C6-L01-X	Garantir CAT-6 U/UTP Patch Cord LSZH 01M
GT-CPC-UU-C6-L02-X	Garantir CAT-6 U/UTP Patch Cord LSZH 02M
GT-CPC-UU-C6-L03-X	Garantir CAT-6 U/UTP Patch Cord LSZH 03M
X: Grey-GY, Blue-BL, Black-BK, White-WH, Red-RD, Yellow-YL	

Ver : 1.0

NOTE : Specifications are subject to change without notice. Garantir products referred to in this datasheet are trademarks of Garantir or its subsidiaries. All other trademarks belong to their respective owners.